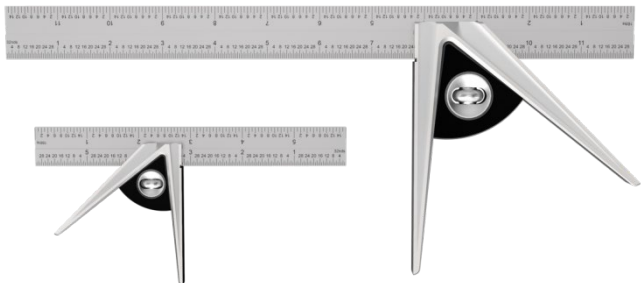


CS-6v2 & 12v2

6"&12"Combination Squares

6"&12"滑动组合角尺



BRIDGE CITY TOOL WORKS

English Version

Congratulations on the purchase of your new Combination Square. All information in this manual is applicable for both the CS-6v2 and 12v2, unless specified otherwise.

GENERAL USAGE NOTES

The CS-6v2 and 12v2 are the modern complements to the original CS-12. Both have stainless steel bodies and black webs made of anodized aluminum.

The 45° leg is significantly longer than that of the original CS-12, giving the user more surface area for more accurate results.

The 12" and 6" Imperial blades feature left-to-right and right-to-left reading 32nds and 16ths. (The 300mm and 150mm Metric blades feature left-to-right and right-to-left reading 1 mm with extra 0.5mm resolution at the end.)

Flipping the square over reveals the same scale on the same edge.

SPECIFICATION

| Model | Name | Measuring range | Reading resolution |
|-----------|--------------------------------------|-----------------|--------------------|
| CS-12v2-M | 12" Combination Square (Metric) | 0~300mm | 1mm |
| CS-6v2-M | 6" Combination Square (Metric) | 0~150mm | 1mm |
| CS-12v2-I | 12" Combination Square (Imperial) | 0~12" | 1/32" |
| CS-6v2-I | 6" Combination Square (Imperial) | 0~6" | 1/32" |

REMOVING THE BLADE

The CS-6v2 and 12v2 blades are interchangeable between the two Combination Squares. To remove the blade, simply loosen the lock knob and pull the blade out of the body.

To reinsert a blade, slide it into the body with the flange of the lock screw inside the groove of the blade. Position the blade as desired and tighten the

lock knob.

The blade can be reversed by using the lock to rotate the lock screw 180° before reinserting the blade.

CARE AND MAINTENANCE

Both the CS-6v2 and 12v2 are made of long lasting and hard wearing materials. Stainless steel requires very little maintenance. The anodized aluminum is very durable and will not tarnish or rust. A clean, soft cloth will easily clean your Combination Square.

All the surfaces of the main body and legs are complete PVD coated presenting good scratch resistance and hardness. A soft cloth will easily clean the surfaces as well.

Never use anything abrasive on any of these surfaces.

CUSTOMIZING YOUR CS-6v2 or 12v2 COMBINATION SQUARE

1. Completely remove the blade, lock screw, and lock knob (See Figure 1).



Figure 1: View of Body

Ruler, Lock Screw, and Lock Knob are removed.

2. The legs of the square body have 90° v-grooves. Figure 2 shows our recommendation of how to prepare your infill material for this leg.

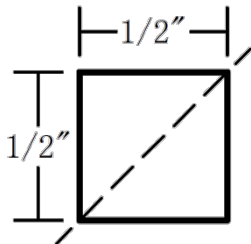


Figure 2: Cross Sectional View of Stock for 90° Leg

Cut through stock along the dashed line.

3. To avoid damaging the two reference surfaces of the square body, cover them with masking tape.

4. We recommend an epoxy or urethane adhesive for attaching the fills to the body. Check the instructions of your adhesive for material compatibility and application methods. Secure your infills in place with clamps. Each infill should have excess material that extends beyond each edge of the V-groove.

5. Remove the excess material once the adhesive has dried. If possible, we recommend using a small hand saw to cut away the bulk. Those with a milling machine can mill the faces flush. When working with dissimilar materials, the final flush faces and end of the body are always done with abrasives. This can be done by hand or with a horizontal belt or disc sander. Avoid damaging the metal portions of the square body during this process.

6. Remove the masking tape before finishing all surfaces of the body with a high quality paste wax

7. Send us a picture of you custom square at Sales@BridgeCityTools.com.

***Please note that adding custom infills is completely optional. Any damage incurred by the tool via user modification is not covered by the tool's warranty.**

中文版本

恭喜您购买了 CS-6v2 & 12v2 滑动组合角尺。
除非另有说明，本说明书中的所有信息同时适用于
CS-6v2 和 12v2。

一般用法说明

CS-6v2 和 12v2 滑动组合角尺是由不锈钢尺子、
不锈钢尺体和黑色阳极氧化的铝合金装饰块等构件
组成。

CS-12v2 尺体的 45° 加长支腿，为用户提供了更
长的测量区域，以获得更加准确的测量结果。

产品规格

| 型号 | 名称 | 测量范围 | 读数精度 |
|-----------|-----------------|---------|-------|
| CS-12v2-M | 12" 滑动组合角尺 (公制) | 0~300mm | 1mm |
| CS-6v2-M | 6" 滑动组合角尺 (公制) | 0~150mm | 1mm |
| CS-12v2-I | 12" 滑动组合角尺 (英制) | 0~12" | 1/32" |
| CS-6v2-I | 6" 滑动组合角尺 (英制) | 0~6" | 1/32" |

刻度尺上的刻度为不同向双向刻度，可从两侧（左向右，右向左）同时读数。

公制刻度尺末端设有 0.5mm 精度读数刻度线。

英制刻度尺同时具有 1/32" 和 1/16" 两种精度。

移除尺子

要移除尺子，只需松开锁定旋钮，将尺子从角尺主体中拉出。要重新插入尺子，将尺子滑入角尺主体，让锁紧螺钉的凸缘处于尺子上凹槽内，根据需要定位尺子位置，拧紧锁紧旋钮。

要将尺子进行 180° 翻转，需在重新插入尺子之前，将锁紧螺钉转动 180°。

维护保养

CS-6v2 和 12v2 都是由持久耐用的耐磨材料制成的。不锈钢的材质只需要很少的维护即可。阳极氧化铝非常耐用，不会失去光泽或生锈。组合角尺主体和尺子表面都做过 PVD 涂层处理，具有良好的抗划

伤性和硬度。用一块干净的软布就可以轻松清理你的组合角尺。

不要使用任何粗糙的清理材料。

定制您的专属组合角尺

CS-6v2 或者 12v2 组合角尺主体的正反面上有一组渐变的 V 型凹槽，您可以根据喜好在凹槽内增添填充物，定制您的专属组合角尺，具体操作方法如下：

1. 将尺子、锁紧螺钉和锁紧旋钮全部移除。
(见图 1)。

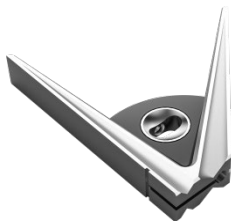


图 1: 角尺整体图

尺子、锁紧螺钉和锁紧旋钮都被移除

2. 角尺主体上具有 90° 的 V 型凹槽。图 2 展示了填充物的推荐尺寸。

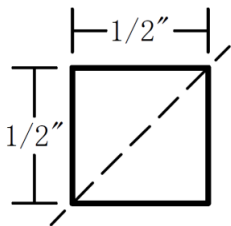


图 2: 角尺主体填充木料的横截面视图
沿虚线锯切木料。

3. 为了避免损坏角尺主体的两个测量基准面，可用美纹胶带将这两个面覆盖进行保护。
4. 我们推荐使用树脂类粘合剂将填充物与角尺主体粘合。进行粘合前，检查粘合剂的材料兼容性和使用说明。粘合到位后，进行夹持固定。每个填充物都要高出 V 型槽边缘少许。
5. 胶粘剂固化后将高出的多余材料清除掉。如果可能的话，我们建议使用一个小手锯来进行锯切。用铣床可以将表面磨平。在使用其他的材料时，最后的表面和边缘磨平的工作

都是要通过砂纸完成。可以手工打磨或者使用垂直砂带砂盘机。在加工过程中，注意避免损坏角尺主体的金属部分。

6. 清除美纹胶带，然后对主体的所有表面进行打蜡处理。

7. 发送照片到邮箱

Sales@BridgeCityTools.com，与我们一起分享你的定制角尺。

***请注意，因用户改装而造成的任何损坏均不在工具的保修范围内。**



Warranty

All returns, replacements, technical services, and support shall be handled by distributor's customer service organization. If there is a defect on the workmanship of the tool (with no fault of the customer) within one year from the original date of purchase, please contact with the distributor's customer service organization and they will determine whether to repair or replace the tool.

质保

所有退货、换货、技术服务和支持均由经销商的客户服务机构负责。如果在原始购买日期后一年内发现工具存在工艺缺陷(客户无过),请与经销商客户服务机构取得联系,并由该服务机构决定是否对工具进行修理或更换。